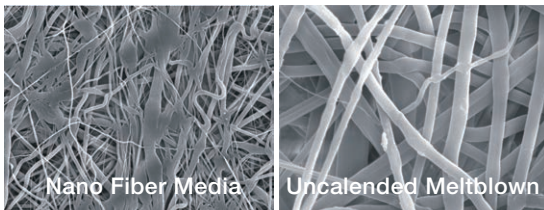


# BevClear AB Filter Cartridges

Absolute Rated Polypropylene Media · Particle Removal

Cobetter **BevClear AB** Filter Cartridges, composed of a polypropylene media, are absolute-rated with high dirt holding capacity, long service and high flow rates. This type of media provides absolute and reliable efficiency for particle retention in beverage filtration.



Trap/Pre-Filtration

Microbiological Stabilization

Gas Filtration

Additional Filters

## Features and Benefits

- Super fine nanofiber media provides excellent particle retention and bio-burden reduction from liquids
- Absolute-rated to ensure high efficiency and dirt holding capacity
- Complies with Plastic Class VI standard
- Complies with Food Contact Regulations: FDA 21CFR177-182 and 1935/2004 EC

## Materials of Construction

<b>Filter Media</b>	Multi-Layer Polypropylene
<b>Cage/Support</b>	Polypropylene
<b>Core/End Caps</b>	Polypropylene



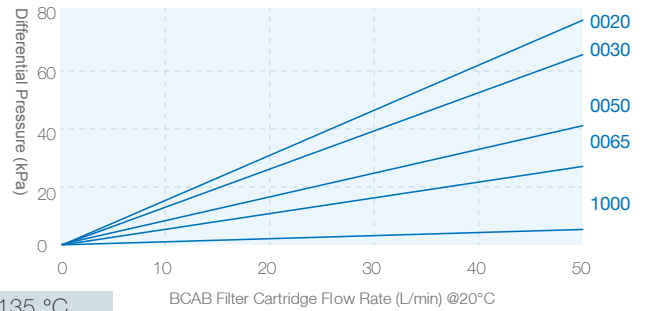
Particle & Bioburden  
Reduction



## Operating Conditions

<b>Maximum Operating Pressure</b>	6.9 bar (100 psi) at 25 °C 4.0 bar (58 psi) at 60 °C 2.4 bar (35 psi) at 80 °C
<b>Maximum Differential Pressure</b>	Forward 6.9 bar (100 psi) at 25 °C 2.4 bar (35 psi) at 80 °C Reverse 3.0 bar (44 psi) at 25 °C 1.0 bar (15 psi) at 80 °C
<b>Sterilization</b>	Inline Steam Sterilization: 30 cycles for 30 min at 135 °C (Differential Pressure < 30kPa) Hot Water Sterilization: 50 cycles for 30 min at 85 °C
<b>Cleaning Solution</b>	2% NaOH Solution @ ≤ 65 °C
<b>Effective Filtration Area</b>	0.53m <sup>2</sup> / Φ71-10 inch

## Flow Rate Characteristics



## Retention Rates

	Retention Rates (%)							
	1.0µm	3.0µm	4.0µm	5.0µm	6.0µm	7.0µm	10µm	20µm
<b>BCAB0020</b>	≥99.99	≥99.99	≥99.99	≥99.99	≥99.99	≥99.99	≥99.99	≥99.99
<b>BCAB0030</b>	≥99.98	≥99.99	≥99.99	≥99.99	≥99.99	≥99.99	≥99.99	≥99.99
<b>BCAB0050</b>	≥99.90	≥99.98	≥99.99	≥99.99	≥99.99	≥99.99	≥99.99	≥99.99
<b>BCAB0065</b>	≥99.50	≥99.90	≥99.98	≥99.99	≥99.99	≥99.99	≥99.99	≥99.99
<b>BCAB0080</b>	≥99.20	≥99.50	≥99.90	≥99.98	≥99.99	≥99.99	≥99.99	≥99.99
<b>BCAB0100</b>	≥99.00	≥99.20	≥99.50	≥99.90	≥99.98	≥99.99	≥99.99	≥99.99
<b>BCAB0300</b>		≥99.00	≥99.20	≥99.50	≥99.90	≥99.98	≥99.99	≥99.99
<b>BCAB0400</b>			≥99.00	≥99.20	≥99.50	≥99.90	≥99.98	≥99.99
<b>BCAB0500</b>				≥99.00	≥99.20	≥99.50	≥99.90	≥99.98
<b>BCAB0600</b>					≥99.00	≥99.20	≥99.50	≥99.90
<b>BCAB0700</b>						≥99.00	≥99.20	≥99.50
<b>BCAB1000</b>							≥99.00	≥99.20
<b>BCAB2000</b>								≥99.00

Tested by ISO 12103-1 A4 Coarse Test Dust

## Ordering Information

BCAB	Removal Ratings	End Cap	Nominal Length	Seal Material	-F
[Φ71]	<b>0020</b> =0.2µm <b>0400</b> =4.0µm	<b>DOE</b> =Double Open End	<b>05</b> = 5"	<b>S</b> =Silicone	
	<b>0030</b> =0.3µm <b>0500</b> =5.0µm	<b>HTC</b> =222 O-ring/Flat (PBT Insert)	<b>10</b> =10"	<b>E</b> =EPDM	
	<b>0050</b> =0.5µm <b>0600</b> =6.0µm	<b>HTF</b> =222 O-ring/Fin (PBT Insert)	<b>20</b> =20"	<b>V</b> =Viton	
	<b>0065</b> =0.65µm <b>0700</b> =7.0µm	<b>HSF</b> =226 O-ring/Fin (PBT Insert)	<b>30</b> =30"		
	<b>0080</b> =0.8µm <b>0800</b> =8.0µm	<b>SSF</b> =226 O-ring/Fin (SS Insert)	<b>40</b> =40"		
	<b>0100</b> =1.0µm <b>1000</b> =10µm	<b>SSC</b> =226 O-ring/Flat (SS Insert)			
	<b>0300</b> =3.0µm <b>2000</b> =20µm	<b>STF</b> =222 O-ring/Fin (SS Insert, 3 Tabs)			